

Modification of NCVEC Public Release January 6, 2022

2022-2026 Technician Class FCC Element 2

NCVEC Question Pool Syllabus & Question Pool

***Effective 7/01/2022 – 6/30/2026 for Technician Class
Examinations***

Contains 5 modifications of January 3 2022 Public Release:

T4A07 Replaced : with . in distractors

T5C08, T5D01, T5D02, T5D03 Reverted $I = V ' R$ to $I = E ' R$

2022-2026 Technician Class FCC Element 2 Question Pool

Effective 7/01/2022 – 6/30/2026 NCVEC

Public Release January 3, 2022

Compiled for Mount Vernon Amateur Radio Club by G M Jacobs, KE8HGE

Table of Contents

SUBELEMENT T1 - COMMISSION'S RULES	1
T1A - Purpose and permissible use of the Amateur Radio Service; Operator/primary station license grant; Meanings of basic terms used in FCC rules; Interference; RACES rules; Phonetics; Frequency Coordinator	1
T1B - Frequency allocations; Emission modes; Spectrum sharing; Transmissions near band edges; Contacting the International Space Station; Power output	2
T1C - Licensing: classes, sequential and vanity call sign systems, places where the Amateur Radio Service is regulated by the FCC, name and address on FCC license database, term, renewal, grace period, maintaining mailing address; International communications.....	4
T1D - Authorized and prohibited transmissions: communications with other countries, music, exchange of information with other services, indecent language, compensation for operating, retransmission of other amateur signals, encryption, sale of equipment, unidentified transmissions, one-way transmission	5
T1E - Control operator: eligibility, designating, privileges, duties, location, required; Control point; Control types: automatic, remote	7
T1F - Station identification; Repeaters; Third party communications; Club stations; FCC inspection	8
SUBELEMENT T2 - OPERATING PROCEDURES	10
T2A - Station operation: choosing an operating frequency, calling another station, test transmissions; Band plans: calling frequencies, repeater offsets	10
T2B – VHF/UHF operating practices: FM repeater, simplex, reverse splits; Access tones: CTCSS, DTMF; DMR operation; Resolving operational problems; Q signals	11
T2C – Public service: emergency operations, applicability of FCC rules, RACES and ARES, net and traffic procedures, operating restrictions during emergencies, use of phonetics in message handling	13
SUBELEMENT T3 – RADIO WAVE PROPAGATION	15
T3A - Radio wave characteristics: how a radio signal travels, fading, multipath, polarization, wavelength vs absorption; Antenna orientation	15
T3B - Electromagnetic wave properties: wavelength vs frequency, nature and velocity of electromagnetic waves, relationship of wavelength and frequency; Electromagnetic spectrum definitions: UHF, VHF, HF	16
T3C - Propagation modes: sporadic E, meteor scatter, auroral propagation, tropospheric ducting; F region skip; Line of sight and radio horizon	17
SUBELEMENT T4 – AMATEUR RADIO PRACTICES	20
T4A – Station setup: connecting a microphone, a power source, a computer, digital equipment, an SWR meter; bonding; Mobile radio installation	20
T4B - Operating controls: frequency tuning, use of filters, squelch function, AGC, memory channels, noise blanker, microphone gain, receiver incremental tuning (RIT), bandwidth selection, digital transceiver configuration	21

SUBELEMENT T5 – ELECTRICAL PRINCIPLES	24
T5A – Current and voltage: terminology and units, conductors and insulators, alternating and direct current	24
T5B - Math for electronics: conversion of electrical units, decibels	25
T5C – Capacitance and inductance terminology and units; Radio frequency definition and units; Impedance definition and units; Calculating power	26
T5D – Ohm’s Law; Series and parallel circuits	28
SUBELEMENT T6 – ELECTRONIC AND ELECTRICAL COMPONENTS	30
T6A - Fixed and variable resistors; Capacitors; Inductors; Fuses; Switches; Batteries	30
T6B – Semiconductors: basic principles and applications of solid state devices, diodes and transistors	31
T6C - Circuit diagrams: use of schematics, basic structure; Schematic symbols of basic components	32
T6D - Component functions: rectifiers, relays, voltage regulators, meters, indicators, integrated circuits, transformers; Resonant circuit; Shielding	35
SUBELEMENT T7 – PRACTICAL CIRCUITS.....	37
T7A – Station equipment: receivers, transceivers, transmitter amplifiers, receive amplifiers, transverters; Basic radio circuit concepts and terminology: sensitivity, selectivity, mixers, oscillators, PTT, modulation	37
T7B – Symptoms, causes, and cures of common transmitter and receiver problems: overload and overdrive, distortion, interference and consumer electronics, RF feedback	38
T7C – Antenna and transmission line measurements and troubleshooting: measuring SWR, effects of high SWR, causes of feed line failures; Basic coaxial cable characteristics; Use of dummy loads when testing	39
T7D – Using basic test instruments: voltmeter, ammeter, and ohmmeter; Soldering	41
SUBELEMENT T8 – SIGNALS AND EMISSIONS	43
T8A – Basic characteristics of FM and SSB; Bandwidth of various modulation modes: CW, SSB, FM, fast-scan TV; Choice of emission type: selection of USB vs LSB, use of SSB for weak signal work, use of FM for VHF packet and repeaters	43
T8B - Amateur satellite operation: Doppler shift, basic orbits, operating protocols, modulation mode selection, transmitter power considerations, telemetry and telecommand, satellite tracking programs, beacons, uplink and downlink mode definitions, spin fading, definition of “LEO”, setting uplink power	44
T8C – Operating activities: radio direction finding, contests, linking over the internet, exchanging grid locators	46
T8D – Non-voice and digital communications: image signals and definition of NTSC, CW, packet radio, PSK, APRS, error detection and correction, amateur radio networking, Digital Mobile Radio, WSJT modes, Broadband-Hamnet	47
SUBELEMENT T9 – ANTENNAS AND FEED LINES.....	49

T9A – Antennas: vertical and horizontal polarization, concept of antenna gain, definition and types of beam antennas, antenna loading, common portable and mobile antennas, relationships between resonant length and frequency, dipole pattern	49
T9B – Feed lines: types, attenuation vs frequency, selecting; SWR concepts; Antenna tuners (couplers); RF Connectors: selecting, weather protection	50
<u>SUBELEMENT T0 – SAFETY</u>	<u>52</u>
T0A – Power circuits and hazards: hazardous voltages, fuses and circuit breakers, grounding, electrical code compliance; Lightning protection; Battery safety	52
T0B – Antenna safety: tower safety and grounding, installing antennas, antenna supports	53
T0C - RF hazards: radiation exposure, proximity to antennas, recognized safe power levels, radiation types, duty cycle	54

SUBELEMENT T1 - COMMISSION'S RULES

[6 Exam Questions - 6 Groups]

T1A - Purpose and permissible use of the Amateur Radio Service; Operator/primary station license grant; Meanings of basic terms used in FCC rules; Interference; RACES rules; Phonetics; Frequency Coordinator

T1A01 [97.1]

Which of the following is part of the Basis and Purpose of the Amateur Radio Service?

Advancing skills in the technical and communication phases of the radio art

~~

T1A02 [97.1]

Which agency regulates and enforces the rules for the Amateur Radio Service in the United States?

The FCC

~~

T1A03 [97.119(b)(2)]

What do the FCC rules state regarding the use of a phonetic alphabet for station identification in the Amateur Radio Service?

It is encouraged

~~

T1A04 [97.5(b)(1)]

How many operator/primary station license grants may be held by any one person?

One

~~

T1A05 [97.7]

What proves that the FCC has issued an operator/primary license grant?

The license appears in the FCC ULS database

~~

T1A06 [97.3(a)(9)]

What is the FCC Part 97 definition of a beacon?

An amateur station transmitting communications for the purposes of observing propagation or related experimental activities

~~

T1A07 [97.3(a)(41)]

What is the FCC Part 97 definition of a space station?

An amateur station located more than 50 km above Earth's surface

~~

T1A08 [97.3(a)(22)]

Which of the following entities recommends transmit/receive channels and other parameters for auxiliary and repeater stations?

Volunteer Frequency Coordinator recognized by local amateurs

~~

T1A09 [97.3(a)(22)]

Who selects a Frequency Coordinator?

Amateur operators in a local or regional area whose stations are eligible to be repeater or auxiliary stations

~~

T1A10 [97.3(a)(38), 97.407]

What is the Radio Amateur Civil Emergency Service (RACES)?

All these choices are correct

~~

T1A11 [97.101 (d)]

When is willful interference to other amateur radio stations permitted?

At no time

<i>T1B - Frequency allocations; Emission modes; Spectrum sharing; Transmissions near band edges; Contacting the International Space Station; Power output</i>

T1B01 [97.301 (e)]

Which of the following frequency ranges are available for phone operation by Technician licensees?

28.300 MHz to 28.500 MHz

~~

T1B02 [97.301, 97.207(c)]

Which amateurs may contact the International Space Station (ISS) on VHF bands?

Any amateur holding a Technician class or higher license

~~

T1B03 [97.301(a)]

Which frequency is in the 6 meter amateur band?

52.525 MHz

~~

T1B04 [97.301(a)]

Which amateur band includes 146.52 MHz?

2 meters

~~

T1B05 [97.305(c)]

How many amateurs use the 219 to 220 MHz segment of 1.25 meter band?

Fixed digital message forwarding systems only

~~

T1B06 [97.301(e), 97.305]

On which HF bands does a Technician class operator have phone privileges?

10 meter band only

~~

T1B07 [97.305(a), (c)]

Which of the following VHF/UHF band segments are limited to CW only?

50.0 MHz to 50.1 MHz and 144.0 MHz to 144.1 MHz

~~

T1B08 [97.303]

How are US amateurs restricted in segments of bands where the Amateur Radio Service is secondary?

U.S. amateurs may find non-amateur stations in those segments, and must avoid interfering with them

~~

T1B09 [97.101(a), 97.301(a-e)]

Why should you not set your transmit frequency to be exactly at the edge of an amateur band or sub-band?

All these choices are correct

~~

T1B10 [97.305(c)]

Where may SSB phone be used in amateur bands above 50 MHz?

In at least some segment of all these bands

~~

T1B11 [97.313]

What is the maximum peak envelope power output for Technician class operators in their HF band segments?

200 watts

~~

T1B12 [97.313(b)]

Except for some specific restrictions, what is the maximum peak envelope power output for Technician class operators using frequencies above 30 MHz?

1500 watts

T1C - Licensing: classes, sequential and vanity call sign systems, places where the Amateur Radio Service is regulated by the FCC, name and address on FCC license database, term, renewal, grace period, maintaining mailing address; International communications

T1C01 [97.9(a), 97.17(a)]

For which license classes are new licenses currently available from the FCC?

Technician, General, Amateur Extra

~~

T1C02 [97.19]

Who may select a desired call sign under the vanity call sign rules?

Any licensed amateur

~~

T1C03 [97.117]

What types of international communications are an FCC-licensed amateur radio station permitted to make?

Communications incidental to the purposes of the Amateur Radio Service and remarks of a personal character

~~

T1C04 [97.23]

What may happen if the FCC is unable to reach you by email?

Revocation of the station license or suspension of the operator license

~~

T1C05

Which of the following is a valid Technician class call sign format?

KF1XXX

~~

T1C06 [97.5(a)(2)]

From which of the following locations may an FCC-licensed amateur station transmit?

From any vessel or craft located in international waters and documented or registered in the United States

~~

T1C07 [97.23]

Which of the following can result in revocation of the station license or suspension of the operator license?

Failure to provide and maintain a correct email address with the FCC

~~

T1C08 [97.25]

What is the normal term for an FCC-issued amateur radio license?

Ten years

~~

T1C09 [97.21(a)(b)]

What is the grace period for renewal if an amateur license expires?

Two years

~~

T1C10 [97.5a]

How soon after passing the examination for your first amateur radio license may you transmit on the amateur radio bands?

As soon as your operator/station license grant appears in the FCC's license database

~~

T1C11 [97.21(b)]

If your license has expired and is still within the allowable grace period, may you continue to transmit on the amateur radio bands?

No, you must wait until the license has been renewed

T1D - Authorized and prohibited transmissions: communications with other countries, music, exchange of information with other services, indecent language, compensation for operating, retransmission of other amateur signals, encryption, sale of equipment, unidentified transmissions, one-way transmission

T1D01 [97.111(a)(1)]

With which countries are FCC-licensed amateur radio stations prohibited from exchanging communications?

Any country whose administration has notified the International Telecommunication Union (ITU) that it objects to such communications

~~

T1D02 [97.113(b), 97.111(b)]

Under which of the following circumstances are one-way transmissions by an amateur station prohibited?

Broadcasting

~~

T1D03 [97.211(b), 97.215(b), 97.113(a)(4)]

When is it permissible to transmit messages encoded to obscure their meaning?

Only when transmitting control commands to space stations or radio control craft

~~

T1D04 [97.113(a)(4), 97.113(c)]

Under what conditions is an amateur station authorized to transmit music using a phone emission?

When incidental to an authorized retransmission of manned spacecraft communications

~~

T1D05 [97.113(a)(3)(ii)]

When may amateur radio operators use their stations to notify other amateurs of the availability of equipment for sale or trade?

When selling amateur radio equipment and not on a regular basis

~~

T1D06 [97.113(a)(4)]

What, if any, are the restrictions concerning transmission of language that may be considered indecent or obscene?

Any such language is prohibited

~~

T1D07 [97.113(d)]

What types of amateur stations can automatically retransmit the signals of other amateur stations?

Repeater, auxiliary, or space stations

~~

T1D08 [97.113(a)(3)(iii)]

In which of the following circumstances may the control operator of an amateur station receive compensation for operating that station?

When the communication is incidental to classroom instruction at an educational institution

~~

T1D09 [97.113(5)(b)]

When may amateur stations transmit information in support of broadcasting, program production, or news gathering, assuming no other means is available?

When such communications are directly related to the immediate safety of human life or protection of property

~~

T1D10 [97.3(a)(10)]

How does the FCC define broadcasting for the Amateur Radio Service?

Transmissions intended for reception by the general public

~~

T1D11 [97.119(a)]

When may an amateur station transmit without identifying on the air?

When transmitting signals to control model craft

T1E - Control operator: eligibility, designating, privileges, duties, location, required; Control point; Control types: automatic, remote

T1E01 [97.7(a)]

When may an amateur station transmit without a control operator?

Never

~~

T1E02 [97.301, 97.207(c)]

Who may be the control operator of a station communicating through an amateur satellite or space station?

Any amateur allowed to transmit on the satellite uplink frequency

~~

T1E03 [97.103(b)]

Who must designate the station control operator?

The station licensee

~~

T1E04 [97.103(b)]

What determines the transmitting frequency privileges of an amateur station?

The class of operator license held by the control operator

~~

T1E05 [97.3(a)(14)]

What is an amateur station's control point?

The location at which the control operator function is performed

~~

T1E06 [97.301]

When, under normal circumstances, may a Technician class licensee be the control operator of a station operating in an Amateur Extra Class band segment?

At no time

~~

T1E07 [97.103(a)]

When the control operator is not the station licensee, who is responsible for the proper operation of the station?

The control operator and the station licensee

~~

T1E08 [97.3(a)(6), 97.205(d)]

Which of the following is an example of automatic control?

Repeater operation

~~

T1E09 [97.109(c)]

Which of the following are required for remote control operation?

All these choices are correct

~~

T1E10 [97.3(a)(39)]

Which of the following is an example of remote control as defined in Part 97?

Operating the station over the internet

~~

T1E11 [97.103(a)]

Who does the FCC presume to be the control operator of an amateur station, unless documentation to the contrary is in the station records?

The station licensee

T1F - Station identification; Repeaters; Third party communications; Club stations; FCC inspection

T1F01 [97.103(c)]

When must the station and its records be available for FCC inspection?

At any time upon request by an FCC representative

~~

T1F02 [97.119 (a)]

How often must you identify with your FCC-assigned call sign when using tactical call signs such as "Race Headquarters"?

At the end of each communication and every ten minutes during a communication

~~

T1F03 [97.119(a)]

When are you required to transmit your assigned call sign?

At least every 10 minutes during and at the end of a communication

~~

T1F04 [97.119(b)(2)]

What language may you use for identification when operating in a phone sub-band?

English

~~

T1F05 [97.119(b)(2)]

What method of call sign identification is required for a station transmitting phone signals?

Send the call sign using a CW or phone emission

~~

T1F06 [97.119(c)]

Which of the following self-assigned indicators are acceptable when using a phone transmission?

All these choices are correct

~~

T1F07 [97.115(a)(2)]

Which of the following restrictions apply when a non-licensed person is allowed to speak to a foreign station using a station under the control of a licensed amateur operator?

The foreign station must be in a country with which the U.S. has a third party agreement

~~

T1F08 [97.3(a)(47)]

What is the definition of third party communications?

A message from a control operator to another amateur station control operator on behalf of another person

~~

T1F09 [97.3(a)(40)]

What type of amateur station simultaneously retransmits the signal of another amateur station on a different channel or channels?

Repeater station

~~

T1F10 [97.205(g)]

Who is accountable if a repeater inadvertently retransmits communications that violate the FCC rules?

The control operator of the originating station

~~

T1F11 [97.5(b)(2)]

Which of the following is a requirement for the issuance of a club station license grant?

The club must have at least four members

~~

SUBELEMENT T2 - OPERATING PROCEDURES

[3 Exam Questions - 3 Groups]

T2A - Station operation: choosing an operating frequency, calling another station, test transmissions; Band plans: calling frequencies, repeater offsets

T2A01

What is a common repeater frequency offset in the 2 meter band?

Plus or minus 600 kHz

~~

T2A02

What is the national calling frequency for FM simplex operations in the 2 meter band?

146.520 MHz

~~

T2A03

What is a common repeater frequency offset in the 70 cm band?

Plus or minus 5 MHz

~~

T2A04

What is an appropriate way to call another station on a repeater if you know the other station's call sign?

Say the station's call sign, then identify with your call sign

~~

T2A05

How should you respond to a station calling CQ?

Transmit the other station's call sign followed by your call sign

~~

T2A06

Which of the following is required when making on-the-air test transmissions?

Identify the transmitting station

~~

T2A07

What is meant by "repeater offset"?

The difference between a repeater's transmit and receive frequencies

~~

T2A08

What is the meaning of the procedural signal "CQ"?

Calling any station

~~

T2A09

Which of the following indicates that a station is listening on a repeater and looking for a contact?

The station's call sign followed by the word "monitoring"

~~

T2A10

What is a band plan, beyond the privileges established by the FCC?

A voluntary guideline for using different modes or activities within an amateur band

~~

T2A11

What term describes an amateur station that is transmitting and receiving on the same frequency?

Simplex

~~

T2A12

What should you do before calling CQ?

All these choices are correct

<i>T2B – VHF/UHF operating practices: FM repeater, simplex, reverse splits; Access tones: CTCSS, DTMF; DMR operation; Resolving operational problems; Q signals</i>

T2B01

How is a VHF/UHF transceiver's "reverse" function used?

To listen on a repeater's input frequency

~~

T2B02

What term describes the use of a sub-audible tone transmitted along with normal voice audio to open the squelch of a receiver?

CTCSS

~~

T2B03

Which of the following describes a linked repeater network?

A network of repeaters in which signals received by one repeater are transmitted by all the repeaters in the network

~~

T2B04

Which of the following could be the reason you are unable to access a repeater whose output you can hear?

All these choices are correct

~~

T2B05

What would cause your FM transmission audio to be distorted on voice peaks?

You are talking too loudly

~~

T2B06

What type of signaling uses pairs of audio tones?

DTMF

~~

T2B07

How can you join a digital repeater's "talkgroup"?

Program your radio with the group's ID or code

~~

T2B08

Which of the following applies when two stations transmitting on the same frequency interfere with each other?

The stations should negotiate continued use of the frequency

~~

T2B09

Why are simplex channels designated in the VHF/UHF band plans?

So stations within range of each other can communicate without tying up a repeater

~~

T2B10

Which Q signal indicates that you are receiving interference from other stations?

QRM

~~

T2B11

Which Q signal indicates that you are changing frequency?

QSY

~~

T2B12

What is the purpose of the color code used on DMR repeater systems?

Establishes groups of users

~~

T2B13

What is the purpose of a squelch function?

Mute the receiver audio when a signal is not present

T2C – Public service: emergency operations, applicability of FCC rules, RACES and ARES, net and traffic procedures, operating restrictions during emergencies, use of phonetics in message handling

T2C01 [97.103(a)]

When do FCC rules NOT apply to the operation of an amateur station?

FCC rules always apply

~~

T2C02

Which of the following are typical duties of a Net Control Station?

Call the net to order and direct communications between stations checking in

~~

T2C03

What technique is used to ensure that voice messages containing unusual words are received correctly?

Spell the words using a standard phonetic alphabet

~~

T2C04

What is RACES?

An FCC part 97 amateur radio service for civil defense communications during national emergencies

~~

T2C05

What does the term “traffic” refer to in net operation?

Messages exchanged by net stations

~~

T2C06

What is the Amateur Radio Emergency Service (ARES)?

A group of licensed amateurs who have voluntarily registered their qualifications and equipment for communications duty in the public service

~~

T2C07

Which of the following is standard practice when you participate in a net?

Unless you are reporting an emergency, transmit only when directed by the net control station

~~

T2C08

Which of the following is a characteristic of good traffic handling?

Passing messages exactly as received

~~

T2C09

Are amateur station control operators ever permitted to operate outside the frequency privileges of their license class?

Yes, but only in situations involving the immediate safety of human life or protection of property

~~

T2C10

What information is contained in the preamble of a formal traffic message?

Information needed to track the message

~~

T2C11

What is meant by “check” in a radiogram header?

The number of words or word equivalents in the text portion of the message

SUBELEMENT T3 – RADIO WAVE PROPAGATION

[3 Exam Questions - 3 Groups]

T3A - Radio wave characteristics: how a radio signal travels, fading, multipath, polarization, wavelength vs absorption; Antenna orientation

T3A01

Why do VHF signal strengths sometimes vary greatly when the antenna is moved only a few feet?

Multipath propagation cancels or reinforces signals

~~

T3A02

What is the effect of vegetation on UHF and microwave signals?

Absorption

~~

T3A03

What antenna polarization is normally used for long-distance CW and SSB contacts on the VHF and UHF bands?

Horizontal

~~

T3A04

What happens when antennas at opposite ends of a VHF or UHF line of sight radio link are not using the same polarization?

Received signal strength is reduced

~~

T3A05

When using a directional antenna, how might your station be able to communicate with a distant repeater if buildings or obstructions are blocking the direct line of sight path?

Try to find a path that reflects signals to the repeater

~~

T3A06

What is the meaning of the term “picket fencing”?

Rapid flutter on mobile signals due to multipath propagation

~~

T3A07

What weather condition might decrease range at microwave frequencies?

Precipitation

~~

T3A08

What is a likely cause of irregular fading of signals propagated by the ionosphere?

Random combining of signals arriving via different paths

~~

T3A09

Which of the following results from the fact that signals propagated by the ionosphere are elliptically polarized?

Either vertically or horizontally polarized antennas may be used for transmission or reception

~~

T3A10

What effect does multi-path propagation have on data transmissions?

Error rates are likely to increase

~~

T3A11

Which region of the atmosphere can refract or bend HF and VHF radio waves?

The ionosphere

~~

T3A12

What is the effect of fog and rain on signals in the 10 meter and 6 meter bands?

There is little effect

T3B - Electromagnetic wave properties: wavelength vs frequency, nature and velocity of electromagnetic waves, relationship of wavelength and frequency; Electromagnetic spectrum definitions: UHF, VHF, HF

T3B01

What is the relationship between the electric and magnetic fields of an electromagnetic wave?

They are at right angles

~~

T3B02

What property of a radio wave defines its polarization?

The orientation of the electric field

~~

T3B03

What are the two components of a radio wave?

Electric and magnetic fields

~~

T3B04

What is the velocity of a radio wave traveling through free space?

Speed of light

~~

T3B05

What is the relationship between wavelength and frequency?

Wavelength gets shorter as frequency increases

~~

T3B06

What is the formula for converting frequency to approximate wavelength in meters?

Wavelength in meters equals 300 divided by frequency in megahertz

~~

T3B07

In addition to frequency, which of the following is used to identify amateur radio bands?

The approximate wavelength in meters

~~

T3B08

What frequency range is referred to as VHF?

30 MHz to 300 MHz

~~

T3B09

What frequency range is referred to as UHF?

300 to 3000 MHz

~~

T3B10

What frequency range is referred to as HF?

3 to 30 MHz

~~

T3B11

What is the approximate velocity of a radio wave in free space?

300,000,000 meters per second

<i>T3C - Propagation modes: sporadic E, meteor scatter, auroral propagation, tropospheric ducting; F region skip; Line of sight and radio horizon</i>

T3C01

Why are simplex UHF signals rarely heard beyond their radio horizon?

UHF signals are usually not propagated by the ionosphere

~~

T3C02

What is a characteristic of HF communication compared with communications on VHF and higher frequencies?

Long-distance ionospheric propagation is far more common on HF

~~

T3C03

What is a characteristic of VHF signals received via auroral backscatter?

They are distorted and signal strength varies considerably

~~

T3C04

Which of the following types of propagation is most commonly associated with occasional strong signals on the 10, 6, and 2 meter bands from beyond the radio horizon?

Sporadic E

~~

T3C05

Which of the following effects may allow radio signals to travel beyond obstructions between the transmitting and receiving stations?

Knife-edge diffraction

~~

T3C06

What type of propagation is responsible for allowing over-the-horizon VHF and UHF communications to ranges of approximately 300 miles on a regular basis?

Tropospheric ducting

~~

T3C07

What band is best suited for communicating via meteor scatter?

6 meters

~~

T3C08

What causes tropospheric ducting?

Temperature inversions in the atmosphere

~~

T3C09

What is generally the best time for long-distance 10 meter band propagation via the F region?

From dawn to shortly after sunset during periods of high sunspot activity

~~

T3C10

Which of the following bands may provide long-distance communications via the ionosphere's F region during the peak of the sunspot cycle?

6 and 10 meters

~~

T3C11

Why is the radio horizon for VHF and UHF signals more distant than the visual horizon?

The atmosphere refracts radio waves slightly

SUBELEMENT T4 – AMATEUR RADIO PRACTICES

[2 Exam Questions - 2 Groups]

T4A – Station setup: connecting a microphone, a power source, a computer, digital equipment, an SWR meter; bonding; Mobile radio installation

T4A01

Which of the following is an appropriate power supply rating for a typical 50 watt output mobile FM transceiver?

13.8 volts at 12 amperes

~~

T4A02

Which of the following should be considered when selecting an accessory SWR meter?

The frequency and power level at which the measurements will be made

~~

T4A03

Why are short, heavy-gauge wires used for a transceiver's DC power connection?

To minimize voltage drop when transmitting

~~

T4A04

How are the transceiver audio input and output connected in a station configured to operate using FT8?

To the audio input and output of a computer running WSJT-X software

~~

T4A05

Where should an RF power meter be installed?

In the feed line, between the transmitter and antenna

~~

T4A06

What signals are used in a computer-radio interface for digital mode operation?

Receive audio, transmit audio, and transmitter keying

~~

T4A07

Which of the following connections is made between a computer and a transceiver to use computer software when operating digital modes?

Computer "line in" to transceiver speaker connector

~~

T4A08

Which of the following conductors is preferred for bonding at RF?

Flat copper strap

~~

T4A09

How can you determine the length of time that equipment can be powered from a battery?

Divide the battery ampere-hour rating by the average current draw of the equipment

~~

T4A10

What function is performed with a transceiver and a digital mode hot spot?

Communication using digital voice or data systems via the internet

~~

T4A11

Where should the negative power return of a mobile transceiver be connected in a vehicle?

At the 12 volt battery chassis ground

~~

T4A12

What is an electronic keyer?

A device that assists in manual sending of Morse code

<i>T4B - Operating controls: frequency tuning, use of filters, squelch function, AGC, memory channels, noise blanker, microphone gain, receiver incremental tuning (RIT), bandwidth selection, digital transceiver configuration</i>
--

T4B01

What is the effect of excessive microphone gain on SSB transmissions?

Distorted transmitted audio

~~

T4B02

Which of the following can be used to enter a transceiver's operating frequency?

The keypad or VFO knob

~~

T4B03

How is squelch adjusted so that a weak FM signal can be heard?

Set the squelch threshold so that receiver output audio is on all the time

~~

T4B04

What is a way to enable quick access to a favorite frequency or channel on your transceiver?

Store it in a memory channel

~~

T4B05

What does the scanning function of an FM transceiver do?

Tunes through a range of frequencies to check for activity

~~

T4B06

Which of the following controls could be used if the voice pitch of a single-sideband signal returning to your CQ call seems too high or low?

The RIT or Clarifier

~~

T4B07

What does a DMR “code plug” contain?

Access information for repeaters and talkgroups

~~

T4B08

What is the advantage of having multiple receive bandwidth choices on a multimode transceiver?

Permits noise or interference reduction by selecting a bandwidth matching the mode

~~

T4B09

How is a specific group of stations selected on a digital voice transceiver?

By entering the group’s identification code

A. By activating automatic identification

~~

T4B10

Which of the following receiver filter bandwidths provides the best signal-to-noise ratio for SSB reception?

2400 Hz

~~

T4B11

Which of the following must be programmed into a D-STAR digital transceiver before transmitting?

Your call sign

~~

T4B12

What is the result of tuning an FM receiver above or below a signal’s frequency?

Distortion of the signal’s audio

SUBELEMENT T5 – ELECTRICAL PRINCIPLES

[4 Exam Questions - 4 Groups]

T5A – Current and voltage: terminology and units, conductors and insulators, alternating and direct current

T5A01

Electrical current is measured in which of the following units?

Amperes

~~

T5A02

Electrical power is measured in which of the following units?

Watts

~~

T5A03

What is the name for the flow of electrons in an electric circuit?

Current

~~

T5A04

What are the units of electrical resistance?

Ohms

~~

T5A05

What is the electrical term for the force that causes electron flow?

Voltage

~~

T5A06

What is the unit of frequency?

Hertz

~~

T5A07

Why are metals generally good conductors of electricity?

They have many free electrons

~~

T5A08

Which of the following is a good electrical insulator?

Glass

~~

T5A09

Which of the following describes alternating current?

Current that alternates between positive and negative directions

~~

T5A10

Which term describes the rate at which electrical energy is used?

Power

~~

T5A11

What type of current flow is opposed by resistance?

All these choices are correct

~~

T5A12

What describes the number of times per second that an alternating current makes a complete cycle?

Frequency

<i>T5B - Math for electronics: conversion of electrical units, decibels</i>

T5B01

How many milliamperes is 1.5 amperes?

1500 milliamperes

~~

T5B02

Which is equal to 1,500,000 hertz?

1500 kHz

~~

T5B03

Which is equal to one kilovolt?

One thousand volts

~~

T5B04

Which is equal to one microvolt?

One one-millionth of a volt

~~

T5B05

Which is equal to 500 milliwatts?

0.5 watts

~~

T5B06

Which is equal to 3000 milliamperes?

3 amperes

~~

T5B07

Which is equal to 3.525 MHz?

3525 kHz

~~

T5B08

Which is equal to 1,000,000 picofarads?

1 microfarad

~~

T5B09

Which decibel value most closely represents a power increase from 5 watts to 10 watts?

3 dB

~~

T5B10

Which decibel value most closely represents a power decrease from 12 watts to 3 watts?

-6 dB

~~

T5B11

Which decibel value represents a power increase from 20 watts to 200 watts?

10 dB

~~

T5B12

Which is equal to 28400 kHz?

28.400 MHz

~~

T5B13

Which is equal to 2425 MHz?

2.425 GHz

T5C – Capacitance and inductance terminology and units; Radio frequency definition and units; Impedance definition and units; Calculating power

T5C01

What describes the ability to store energy in an electric field?

Capacitance

~~

T5C02

What is the unit of capacitance?

The farad

~~

T5C03

What describes the ability to store energy in a magnetic field?

Inductance

~~

T5C04

What is the unit of inductance?

The henry

~~

T5C05

What is the unit of impedance?

The ohm

~~

T5C06

What does the abbreviation “RF” mean?

Radio frequency signals of all types

~~

T5C07

What is the abbreviation for megahertz?

MHz

~~

T5C08

What is the formula used to calculate electrical power (P) in a DC circuit?

$P = E \times I$

~~

T5C09

How much power is delivered by a voltage of 13.8 volts DC and a current of 10 amperes?

138 watts

~~

T5C10

How much power is delivered by a voltage of 12 volts DC and a current of 2.5 amperes?

30 watts

~~

T5C11

How much current is required to deliver 120 watts at a voltage of 12 volts DC?

10 amperes

~~

T5C12

What is impedance?

The opposition to AC current flow

~~

T5C13

What is the abbreviation for kilohertz?

kHz

<i>T5D – Ohm's Law; Series and parallel circuits</i>
--

T5D01

What formula is used to calculate current in a circuit?

$I = E / R$

~~

T5D02

What formula is used to calculate voltage in a circuit?

$E = I \times R$

~~

T5D03

What formula is used to calculate resistance in a circuit?

$R = E / I$

~~

T5D04

What is the resistance of a circuit in which a current of 3 amperes flows when connected to 90 volts?

30 ohms

~~

T5D05

What is the resistance of a circuit for which the applied voltage is 12 volts and the current flow is 1.5 amperes?

8 ohms

~~

T5D06

What is the resistance of a circuit that draws 4 amperes from a 12-volt source?

3 ohms

~~

T5D07

What is the current in a circuit with an applied voltage of 120 volts and a resistance of 80 ohms?

1.5 amperes

~~

T5D08

What is the current through a 100-ohm resistor connected across 200 volts?

2 amperes

~~

T5D09

What is the current through a 24-ohm resistor connected across 240 volts?

10 amperes

~~

T5D10

What is the voltage across a 2-ohm resistor if a current of 0.5 amperes flows through it?

1 volt

~~

T5D11

What is the voltage across a 10-ohm resistor if a current of 1 ampere flows through it?

10 volts

~~

T5D12

What is the voltage across a 10-ohm resistor if a current of 2 amperes flows through it?

20 volts

~~

T5D13

In which type of circuit is DC current the same through all components?

Series

~~

T5D14

In which type of circuit is voltage the same across all components?

Parallel

SUBELEMENT T6 – ELECTRONIC AND ELECTRICAL COMPONENTS

[4 Exam Questions - 4 Groups]

T6A - Fixed and variable resistors; Capacitors; Inductors; Fuses; Switches; Batteries

T6A01

What electrical component opposes the flow of current in a DC circuit?

Resistor

~~

T6A02

What type of component is often used as an adjustable volume control?

Potentiometer

~~

T6A03

What electrical parameter is controlled by a potentiometer?

Resistance

~~

T6A04

What electrical component stores energy in an electric field?

Capacitor

~~

T6A05

What type of electrical component consists of conductive surfaces separated by an insulator?

Capacitor

~~

T6A06

What type of electrical component stores energy in a magnetic field?

Inductor

~~

T6A07

What electrical component is typically constructed as a coil of wire?

Inductor

~~

T6A08

What is the function of an SPDT switch?

A single circuit is switched between one of two other circuits

~~

T6A09

What electrical component is used to protect other circuit components from current overloads?

Fuse

~~

T6A10

Which of the following battery chemistries is rechargeable?

All these choices are correct

~~

T6A11

Which of the following battery chemistries is not rechargeable?

Carbon-zinc

~~

T6A12

What type of switch is represented by component 3 in figure T-2?

Single-pole single-throw

T6B – Semiconductors: basic principles and applications of solid state devices, diodes and transistors

T6B01

Which is true about forward voltage drop in a diode?

It is lower in some diode types than in others

~~

T6B02

What electronic component allows current to flow in only one direction?

Diode

~~

T6B03

Which of these components can be used as an electronic switch?

Transistor

~~

T6B04

Which of the following components can consist of three regions of semiconductor material?

Transistor

~~

T6B05

What type of transistor has a gate, drain, and source?

Field-effect

~~

T6B06

How is the cathode lead of a semiconductor diode often marked on the package?

With a stripe

~~

T6B07

What causes a light-emitting diode (LED) to emit light?

Forward DC current

~~

T6B08

What does the abbreviation FET stand for?

Field Effect Transistor

~~

T6B09

What are the names for the electrodes of a diode?

Anode and cathode

~~

T6B10

Which of the following can provide power gain?

Transistor

~~

T6B11

What is the term that describes a device's ability to amplify a signal?

Gain

~~

T6B12

What are the names of the electrodes of a bipolar junction transistor?

Emitter, base, collector

~~

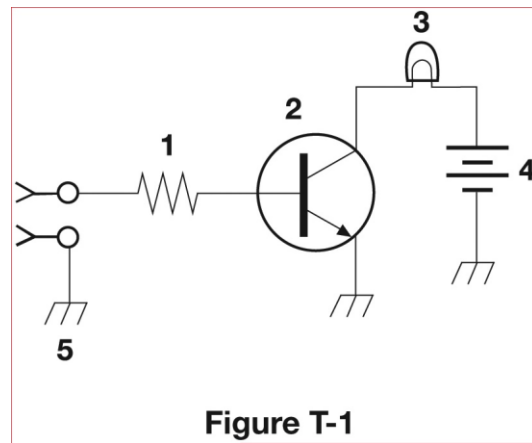
<i>T6C - Circuit diagrams: use of schematics, basic structure; Schematic symbols of basic components</i>
--

T6C01

What is the name of an electrical wiring diagram that uses standard component symbols?

Schematic

~~



T6C02

What is component 1 in figure T-1?

Resistor

~~

T6C03

What is component 2 in figure T-1?

Transistor

~~

T6C04

What is component 3 in figure T-1?

Lamp

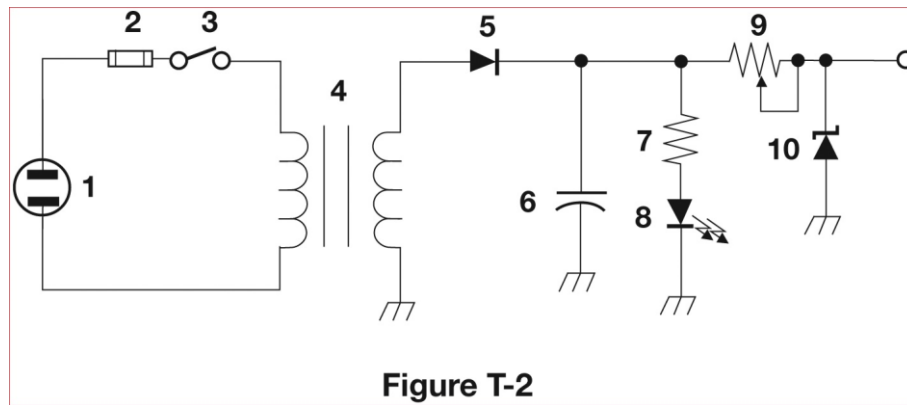
~~

T6C05

What is component 4 in figure T-1?

Battery

~~



T6C06

What is component 6 in figure T-2?

Capacitor

~~

T6C07

What is component 8 in figure T-2?

Light emitting diode

~~

T6C08

What is component 9 in figure T-2?

Variable resistor

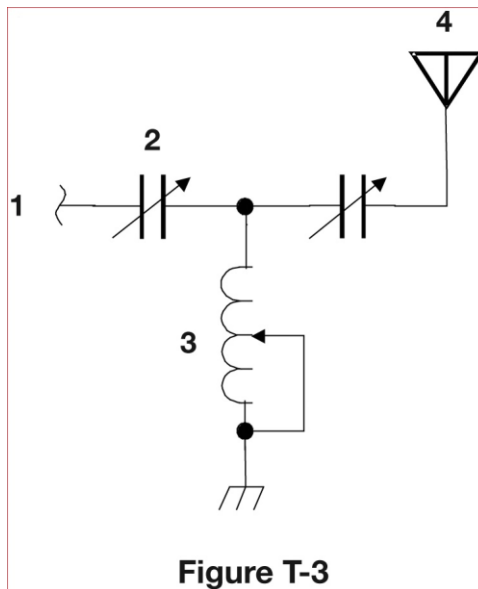
~~

T6C09

What is component 4 in figure T-2?

Transformer

~~



T6C10

What is component 3 in figure T-3?

Variable inductor

~~

T6C11

What is component 4 in figure T-3?

Antenna

~~

T6C12

Which of the following is accurately represented in electrical schematics?

Component connections

T6D - Component functions: rectifiers, relays, voltage regulators, meters, indicators, integrated circuits, transformers; Resonant circuit; Shielding

T6D01

Which of the following devices or circuits changes an alternating current into a varying direct current signal?

Rectifier

~~

T6D02

What is a relay?

An electrically-controlled switch

~~

T6D03

Which of the following is a reason to use shielded wire?

To prevent coupling of unwanted signals to or from the wire

~~

T6D04

Which of the following displays an electrical quantity as a numeric value?

Meter

~~

T6D05

What type of circuit controls the amount of voltage from a power supply?

Regulator

~~

T6D06

What component changes 120 V AC power to a lower AC voltage for other uses?

Transformer

~~

T6D07

Which of the following is commonly used as a visual indicator?

LED

~~

T6D08

Which of the following is combined with an inductor to make a resonant circuit?

Capacitor

~~

T6D09

What is the name of a device that combines several semiconductors and other components into one package?

Integrated circuit

~~

T6D10

What is the function of component 2 in figure T-1?

Control the flow of current

~~

T6D11

Which of the following is a resonant or tuned circuit?

An inductor and a capacitor in series or parallel

SUBELEMENT T7 – PRACTICAL CIRCUITS

[4 Exam Questions - 4 Groups]

T7A – Station equipment: receivers, transceivers, transmitter amplifiers, receive amplifiers, transverters; Basic radio circuit concepts and terminology: sensitivity, selectivity, mixers, oscillators, PTT, modulation

T7A01

Which term describes the ability of a receiver to detect the presence of a signal?

Sensitivity

~~

T7A02

What is a transceiver?

A device that combines a receiver and transmitter

~~

T7A03

Which of the following is used to convert a signal from one frequency to another?

Mixer

~~

T7A04

Which term describes the ability of a receiver to discriminate between multiple signals?

Selectivity

~~

T7A05

What is the name of a circuit that generates a signal at a specific frequency?

Oscillator

~~

T7A06

What device converts the RF input and output of a transceiver to another band?

Transverter

~~

T7A07

What is the function of a transceiver's PTT input?

Switches transceiver from receive to transmit when grounded

~~

T7A08

Which of the following describes combining speech with an RF carrier signal?

Modulation

~~

T7A09

What is the function of the SSB/CW-FM switch on a VHF power amplifier?

Set the amplifier for proper operation in the selected mode

~~

T7A10

What device increases the transmitted output power from a transceiver?

An RF power amplifier

~~

T7A11

Where is an RF preamplifier installed?

Between the antenna and receiver

T7B – Symptoms, causes, and cures of common transmitter and receiver problems: overload and overdrive, distortion, interference and consumer electronics, RF feedback

T7B01

What can you do if you are told your FM handheld or mobile transceiver is over-deviating?

Talk farther away from the microphone

~~

T7B02

What would cause a broadcast AM or FM radio to receive an amateur radio transmission unintentionally?

The receiver is unable to reject strong signals outside the AM or FM band

~~

T7B03

Which of the following can cause radio frequency interference?

All these choices are correct

~~

T7B04

Which of the following could you use to cure distorted audio caused by RF current on the shield of a microphone cable?

Ferrite choke

~~

T7B05

How can fundamental overload of a non-amateur radio or TV receiver by an amateur signal be reduced or eliminated?

Block the amateur signal with a filter at the antenna input of the affected receiver

~~

T7B06

Which of the following actions should you take if a neighbor tells you that your station's transmissions are interfering with their radio or TV reception?

Make sure that your station is functioning properly and that it does not cause interference to your own radio or television when it is tuned to the same channel

~~

T7B07

Which of the following can reduce overload of a VHF transceiver by a nearby commercial FM station?

Installing a band-reject filter

~~

T7B08

What should you do if something in a neighbor's home is causing harmful interference to your amateur station?

All these choices are correct

~~

T7B09

What should be the first step to resolve non-fiber optic cable TV interference caused by your amateur radio transmission?

Be sure all TV feed line coaxial connectors are installed properly

~~

T7B10

What might be a problem if you receive a report that your audio signal through an FM repeater is distorted or unintelligible?

All these choices are correct

~~

T7B11

What is a symptom of RF feedback in a transmitter or transceiver?

Reports of garbled, distorted, or unintelligible voice transmissions

~~

<i>T7C – Antenna and transmission line measurements and troubleshooting: measuring SWR, effects of high SWR, causes of feed line failures; Basic coaxial cable characteristics; Use of dummy loads when testing</i>

T7C01

What is the primary purpose of a dummy load?

To prevent transmitting signals over the air when making tests

~~

T7C02

Which of the following is used to determine if an antenna is resonant at the desired operating frequency?

An antenna analyzer

~~

T7C03

What does a dummy load consist of?

A non-inductive resistor mounted on a heat sink

~~

T7C04

What reading on an SWR meter indicates a perfect impedance match between the antenna and the feed line?

1:1

~~

T7C05

Why do most solid-state transmitters reduce output power as SWR increases beyond a certain level?

To protect the output amplifier transistors

~~

T7C06

What does an SWR reading of 4:1 indicate?

Impedance mismatch

~~

T7C07

What happens to power lost in a feed line?

It is converted into heat

~~

T7C08

Which instrument can be used to determine SWR?

Directional wattmeter

~~

T7C09

Which of the following causes failure of coaxial cables?

Moisture contamination

~~

T7C10

Why should the outer jacket of coaxial cable be resistant to ultraviolet light?

Ultraviolet light can damage the jacket and allow water to enter the cable

~~

T7C11

What is a disadvantage of air core coaxial cable when compared to foam or solid dielectric types?

It requires special techniques to prevent moisture in the cable

T7D – Using basic test instruments: voltmeter, ammeter, and ohmmeter; Soldering

T7D01

Which instrument would you use to measure electric potential?

A voltmeter

~~

T7D02

How is a voltmeter connected to a component to measure applied voltage?

In parallel

~~

T7D03

When configured to measure current, how is a multimeter connected to a component?

In series

~~

T7D04

Which instrument is used to measure electric current?

An ammeter

~~

T7D05

How is an ohmmeter connected to a component to measure its resistance?

In parallel

~~

T7D06

Which of the following can damage a multimeter?

Attempting to measure voltage when using the resistance setting

~~

T7D07

Which of the following measurements are made using a multimeter?

Voltage and resistance

~~

T7D08

Which of the following types of solder should not be used for radio and electronic applications?

Acid-core solder

~~

T7D09

What is the characteristic appearance of a cold tin-lead solder joint?

A rough or lumpy surface

~~

T7D10

What reading indicates that an ohmmeter is connected across a large, discharged capacitor?

Increasing resistance with time

~~

T7D11

Which of the following precautions should be taken when measuring in-circuit resistance with an ohmmeter?

Ensure that the circuit is not powered

SUBELEMENT T8 – SIGNALS AND EMISSIONS

[4 Exam Questions - 4 Groups]

T8A – Basic characteristics of FM and SSB; Bandwidth of various modulation modes: CW, SSB, FM, fast-scan TV; Choice of emission type: selection of USB vs LSB, use of SSB for weak signal work, use of FM for VHF packet and repeaters

T8A01

Which of the following is a form of amplitude modulation?

Single sideband

~~

T8A02

What type of modulation is commonly used for VHF packet radio transmissions?

FM or PM

~~

T8A03

Which type of voice mode is often used for long-distance (weak signal) contacts on the VHF and UHF bands?

SSB

~~

T8A04

Which type of modulation is commonly used for VHF and UHF voice repeaters?

FM or PM

~~

T8A05

Which of the following types of signal has the narrowest bandwidth?

CW

~~

T8A06

Which sideband is normally used for 10 meter HF, VHF, and UHF single-sideband communications?

Upper sideband

~~

T8A07

What is a characteristic of single sideband (SSB) compared to FM?

SSB signals have narrower bandwidth

~~

T8A08

What is the approximate bandwidth of a typical single sideband (SSB) voice signal?

3 kHz

~~

T8A09

What is the approximate bandwidth of a VHF repeater FM voice signal?

Between 10 and 15 kHz

~~

T8A10

What is the approximate bandwidth of AM fast-scan TV transmissions?

About 6 MHz

~~

T8A11

What is the approximate bandwidth required to transmit a CW signal?

150 Hz

~~

T8A12

Which of the following is a disadvantage of FM compared with single sideband?

Only one signal can be received at a time

T8B - Amateur satellite operation: Doppler shift, basic orbits, operating protocols, modulation mode selection, transmitter power considerations, telemetry and telecommand, satellite tracking programs, beacons, uplink and downlink mode definitions, spin fading, definition of "LEO", setting uplink power

T8B01

What telemetry information is typically transmitted by satellite beacons?

Health and status of the satellite

~~

T8B02

What is the impact of using excessive effective radiated power on a satellite uplink?

Blocking access by other users

~~

T8B03

Which of the following are provided by satellite tracking programs?

All these choices are correct

~~

T8B04

What mode of transmission is commonly used by amateur radio satellites?

All these choices are correct

~~

T8B05

What is a satellite beacon?

A transmission from a satellite that contains status information

~~

T8B06

Which of the following are inputs to a satellite tracking program?

The Keplerian elements

~~

T8B07

What is Doppler shift in reference to satellite communications?

An observed change in signal frequency caused by relative motion between the satellite and Earth station

~~

T8B08

What is meant by the statement that a satellite is operating in U/V mode?

The satellite uplink is in the 70 centimeter band and the downlink is in the 2 meter band

~~

T8B09

What causes spin fading of satellite signals?

Rotation of the satellite and its antennas

~~

T8B10

What is a LEO satellite?

A satellite in low earth orbit

~~

T8B11

Who may receive telemetry from a space station?

Anyone

~~

T8B12

Which of the following is a way to determine whether your satellite uplink power is neither too low nor too high?

Your signal strength on the downlink should be about the same as the beacon

T8C – Operating activities: radio direction finding, contests, linking over the internet, exchanging grid locators

T8C01

Which of the following methods is used to locate sources of noise interference or jamming?

Radio direction finding

~~

T8C02

Which of these items would be useful for a hidden transmitter hunt?

A directional antenna

~~

T8C03

What operating activity involves contacting as many stations as possible during a specified period?

Contesting

~~

T8C04

Which of the following is good procedure when contacting another station in a contest?

Send only the minimum information needed for proper identification and the contest exchange

~~

T8C05

What is a grid locator?

A letter-number designator assigned to a geographic location

~~

T8C06

How is over the air access to IRLP nodes accomplished?

By using DTMF signals

~~

T8C07

What is Voice Over Internet Protocol (VoIP)?

A method of delivering voice communications over the internet using digital techniques

~~

T8C08

What is the Internet Radio Linking Project (IRLP)?

A technique to connect amateur radio systems, such as repeaters, via the internet using

Voice Over Internet Protocol (VoIP)

~~

T8C09

Which of the following protocols enables an amateur station to transmit through a repeater without using a radio to initiate the transmission?

EchoLink

~~

T8C10

What is required before using the EchoLink system?

Register your call sign and provide proof of license

~~

T8C11

What is an amateur radio station that connects other amateur stations to the internet?

A gateway

T8D – Non-voice and digital communications: image signals and definition of NTSC, CW, packet radio, PSK, APRS, error detection and correction, amateur radio networking, Digital Mobile Radio, WSJT modes, Broadband-Hamnet

T8D01

Which of the following is a digital communications mode?

All these choices are correct

~~

T8D02

What is a “talkgroup” on a digital repeater?

A way for groups of users to share a channel at different times without hearing other users on the channel

~~

T8D03

What kind of data can be transmitted by APRS?

All these choices are correct

~~

T8D04

What type of transmission is indicated by the term "NTSC?"

An analog fast-scan color TV signal

~~

T8D05

Which of the following is an application of APRS?

Providing real-time tactical digital communications in conjunction with a map showing the

locations of stations

~~

T8D06

What does the abbreviation "PSK" mean?

Phase Shift Keying

~~

T8D07

Which of the following describes DMR?

A technique for time-multiplexing two digital voice signals on a single 12.5 kHz repeater channel

~~

T8D08

Which of the following is included in packet radio transmissions?

All these choices are correct

~~

T8D09

What is CW?

Another name for a Morse code transmission

~~

T8D10

Which of the following operating activities is supported by digital mode software in the WSJT-X software suite?

All these choices are correct

~~

T8D11

What is an ARQ transmission system?

An error correction method in which the receiving station detects errors and sends a request for retransmission

~~

T8D12

Which of the following best describes an amateur radio mesh network?

An amateur-radio based data network using commercial Wi-Fi equipment with modified firmware

~~

T8D13

What is FT8?

A digital mode capable of low signal-to-noise operation

SUBELEMENT T9 – ANTENNAS AND FEED LINES

[2 Exam Questions - 2 Groups]

T9A – Antennas: vertical and horizontal polarization, concept of antenna gain, definition and types of beam antennas, antenna loading, common portable and mobile antennas, relationships between resonant length and frequency, dipole pattern

T9A01

What is a beam antenna?

An antenna that concentrates signals in one direction

~~

T9A02

Which of the following describes a type of antenna loading?

Electrically lengthening by inserting inductors in radiating elements

~~

T9A03

Which of the following describes a simple dipole oriented parallel to Earth's surface?

A horizontally polarized antenna

~~

T9A04

What is a disadvantage of the short, flexible antenna supplied with most handheld radio transceivers, compared to a full-sized quarter-wave antenna?

It has low efficiency

~~

T9A05

Which of the following increases the resonant frequency of a dipole antenna?

Shortening it

~~

T9A06

Which of the following types of antenna offers the greatest gain?

Yagi

~~

T9A07

What is a disadvantage of using a handheld VHF transceiver with a flexible antenna inside a vehicle?

Signal strength is reduced due to the shielding effect of the vehicle

~~

T9A08

What is the approximate length, in inches, of a quarter-wavelength vertical antenna for 146 MHz?

19

~~

T9A09

What is the approximate length, in inches, of a half-wavelength 6 meter dipole antenna?

112

~~

T9A10

In which direction does a half-wave dipole antenna radiate the strongest signal?

Broadside to the antenna

~~

T9A11

What is antenna gain?

The increase in signal strength in a specified direction compared to a reference antenna

~~

T9A12

What is an advantage of a 5/8 wavelength whip antenna for VHF or UHF mobile service?

It has more gain than a 1/4-wavelength antenna

<i>T9B – Feed lines: types, attenuation vs frequency, selecting; SWR concepts; Antenna tuners (couplers); RF Connectors: selecting, weather protection</i>
--

T9B01

What is a benefit of low SWR?

Reduced signal loss

~~

T9B02

What is the most common impedance of coaxial cables used in amateur radio?

50 ohms

~~

T9B03

Why is coaxial cable the most common feed line for amateur radio antenna systems?

It is easy to use and requires few special installation considerations

~~

T9B04

What is the major function of an antenna tuner (antenna coupler)?

It matches the antenna system impedance to the transceiver's output impedance

~~

T9B05

What happens as the frequency of a signal in coaxial cable is increased?

The loss increases

~~

T9B06

Which of the following RF connector types is most suitable for frequencies above 400 MHz?

Type N

~~

T9B07

Which of the following is true of PL-259 type coax connectors?

They are commonly used at HF and VHF frequencies

~~

T9B08

Which of the following is a source of loss in coaxial feed line?

All these choices are correct

~~

T9B09

What can cause erratic changes in SWR?

Loose connection in the antenna or feed line

~~

T9B10

What is the electrical difference between RG-58 and RG-213 coaxial cable?

RG-213 cable has less loss at a given frequency

~~

T9B11

Which of the following types of feed line has the lowest loss at VHF and UHF?

Air-insulated hardline

~~

T9B12

What is standing wave ratio (SWR)?

A measure of how well a load is matched to a transmission line

SUBELEMENT T0 – SAFETY

[3 Exam Questions - 3 Groups]

T0A – Power circuits and hazards: hazardous voltages, fuses and circuit breakers, grounding, electrical code compliance; Lightning protection; Battery safety

T0A01

Which of the following is a safety hazard of a 12-volt storage battery?

Shorting the terminals can cause burns, fire, or an explosion

~~

T0A02

What health hazard is presented by electrical current flowing through the body?

All these choices are correct

~~

T0A03

In the United States, what circuit does black wire insulation indicate in a three-wire 120 V cable?

Hot

~~

T0A04

What is the purpose of a fuse in an electrical circuit?

To remove power in case of overload

~~

T0A05

Why should a 5-ampere fuse never be replaced with a 20-ampere fuse?

Excessive current could cause a fire

~~

T0A06

What is a good way to guard against electrical shock at your station?

All these choices are correct

~~

T0A07

Where should a lightning arrester be installed in a coaxial feed line?

On a grounded panel near where feed lines enter the building

~~

T0A08

Where should a fuse or circuit breaker be installed in a 120V AC power circuit?

In series with the hot conductor only

~~

T0A09

What should be done to all external ground rods or earth connections?

Bond them together with heavy wire or conductive strap

~~

T0A10

What hazard is caused by charging or discharging a battery too quickly?

Overheating or out-gassing

~~

T0A11

What hazard exists in a power supply immediately after turning it off?

Charge stored in filter capacitors

~~

T0A12

Which of the following precautions should be taken when measuring high voltages with a voltmeter?

Ensure that the voltmeter and leads are rated for use at the voltages to be measured

T0B – Antenna safety: tower safety and grounding, installing antennas, antenna supports

T0B01

Which of the following is good practice when installing ground wires on a tower for lightning protection?

Ensure that connections are short and direct

~~

T0B02

What is required when climbing an antenna tower?

All these choices are correct

~~

T0B03

Under what circumstances is it safe to climb a tower without a helper or observer?

Never

~~

T0B04

Which of the following is an important safety precaution to observe when putting up an antenna tower?

Look for and stay clear of any overhead electrical wires

~~

T0B05

What is the purpose of a safety wire through a turnbuckle used to tension guy lines?

Prevent loosening of the turnbuckle from vibration

~~

T0B06

What is the minimum safe distance from a power line to allow when installing an antenna?

Enough so that if the antenna falls, no part of it can come closer than 10 feet to the power wires

~~

T0B07

Which of the following is an important safety rule to remember when using a crank-up tower?

This type of tower must not be climbed unless it is retracted, or mechanical safety locking devices have been installed

~~

T0B08

Which is a proper grounding method for a tower?

Separate eight-foot ground rods for each tower leg, bonded to the tower and each other

~~

T0B09

Why should you avoid attaching an antenna to a utility pole?

The antenna could contact high-voltage power lines

~~

T0B10

Which of the following is true when installing grounding conductors used for lightning protection?

Sharp bends must be avoided

~~

T0B11

Which of the following establishes grounding requirements for an amateur radio tower or antenna?

Local electrical codes

T0C - RF hazards: radiation exposure, proximity to antennas, recognized safe power levels, radiation types, duty cycle

T0C01

What type of radiation are radio signals?

Non-ionizing radiation

~~

T0C02

At which of the following frequencies does maximum permissible exposure have the lowest value?

50 MHz

~~

T0C03

How does the allowable power density for RF safety change if duty cycle changes from 100 percent to 50 percent?

It increases by a factor of 2

~~

T0C04

What factors affect the RF exposure of people near an amateur station antenna?

All these choices are correct

~~

T0C05

Why do exposure limits vary with frequency?

The human body absorbs more RF energy at some frequencies than at others

~~

T0C06

Which of the following is an acceptable method to determine whether your station complies with FCC RF exposure regulations?

All these choices are correct

~~

T0C07

What hazard is created by touching an antenna during a transmission?

RF burn to skin

~~

T0C08

Which of the following actions can reduce exposure to RF radiation?

Relocate antennas

~~

T0C09

How can you make sure your station stays in compliance with RF safety regulations?

By re-evaluating the station whenever an item in the transmitter or antenna system is changed

~~

T0C10

It affects the average exposure to radiation

~~

T0C11

What is the definition of duty cycle during the averaging time for RF exposure?

The percentage of time that a transmitter is transmitting

~~

T0C12

How does RF radiation differ from ionizing radiation (radioactivity)?

RF radiation does not have sufficient energy to cause chemical changes in cells and damage DNA

~~

T0C13

Who is responsible for ensuring that no person is exposed to RF energy above the FCC exposure limits?

The station licensee